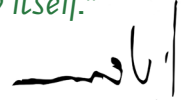




# Portraits of the Greats? Great Portraits?

*"I love color; for me color comes out of my stomach like food.  
The main thing is color. The content emerges by itself."*



Pinchas Litvinovsky



Become the artist! **Start** by taking a selfie, then **choose** a portrait that fascinates or intrigues you.



**Study** the portrait closely, allowing your eyes to explore it. Spend 30 seconds observing its details, moving from top to bottom and across the center.



**List the colors that you see:**

\_\_\_\_\_

\_\_\_\_\_

\_\_\_\_\_

Are you surprised by the colors you listed?

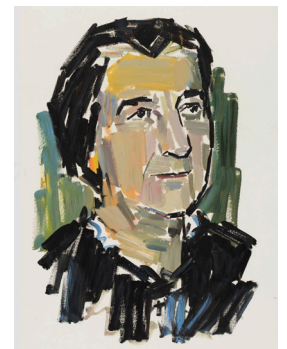


**Take your time** to consider how each aspect contributes to the portrait's overall character and impression.

**Which element of the portrait best conveys personality?**

**Rank** the following elements from 1 (least impactful) to 5 (most impactful):

- Pose (body position)
- Expression (facial look)
- Color
- Style (abstract, realistic, playful, etc.)
- Clothing



**Pose** like one of the greats! **Take** another selfie (portrait), this time next to the portrait you have been looking at.

**Don't forget to have your own AI-created portrait done in Litvinovsk's different styles on the Ground Floor!**



# Litvinovsky's portraits of Rabbis: Illustration or Illumination?



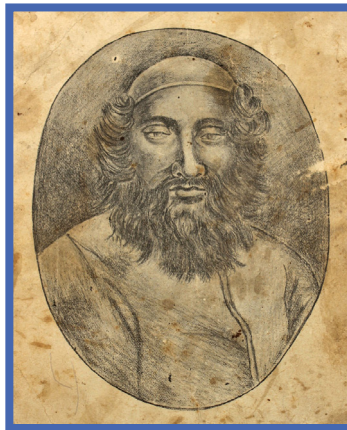
Match the painting to the original:



R. Abraham Isaac  
Kook HaCohen



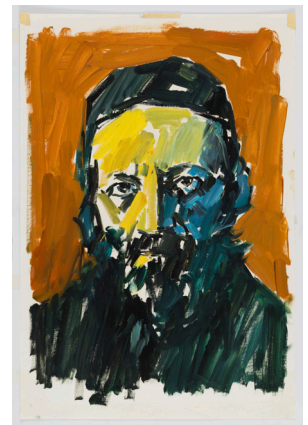
R. Shlomo Friedman  
(Rebbe of Chortkov)



R. Simcha Bunim  
Bonhardt



R. Menachem Mendel  
Hager





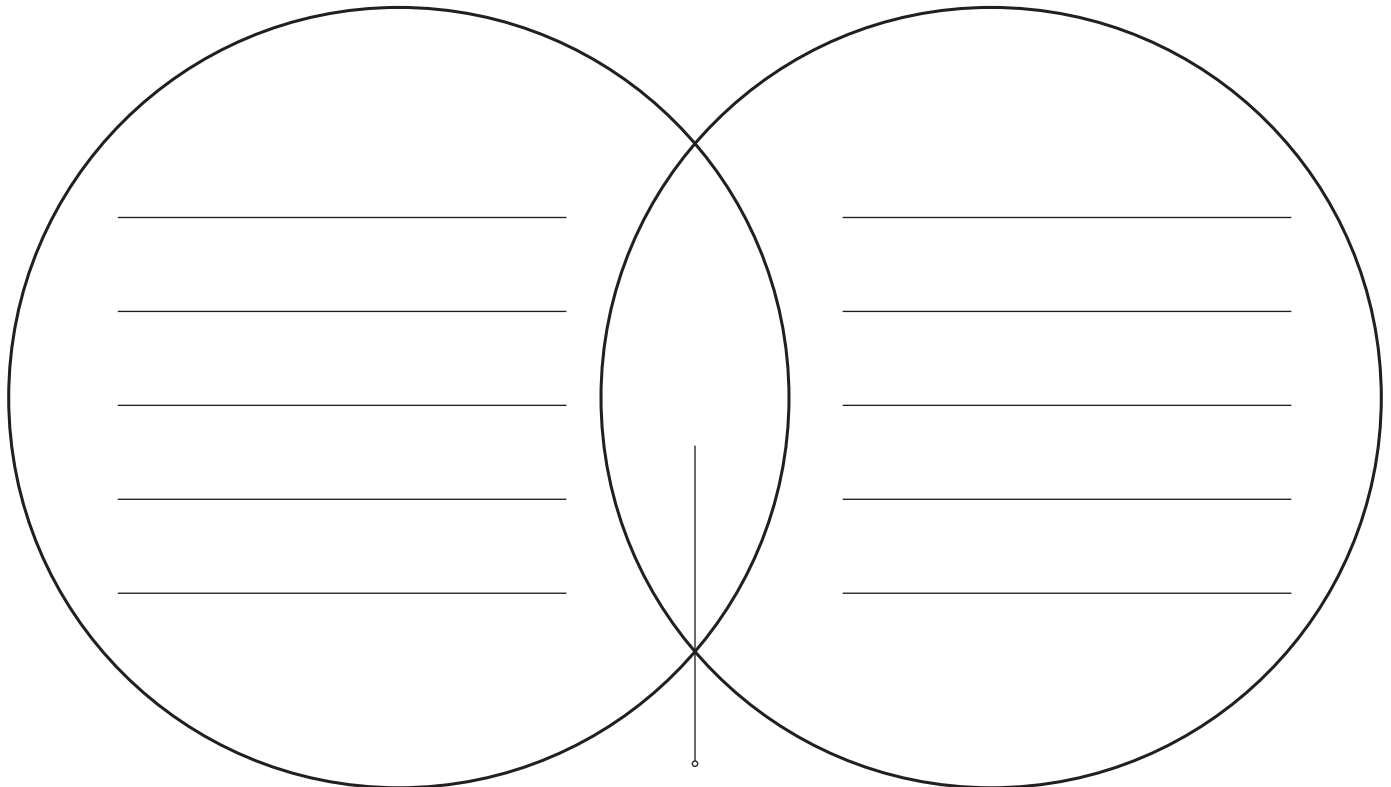
Choose one portrait pair and compare:

What is the same? What is different?

In circle on the right, write a few words **describing** the style, color, pose, expression, clothing of the painting. In circle on the left, **write** a few words describing the style, color, pose, expression of the original. In the overlapping ellipse, **write** what they share in common.

original

painting



common

---

---

---

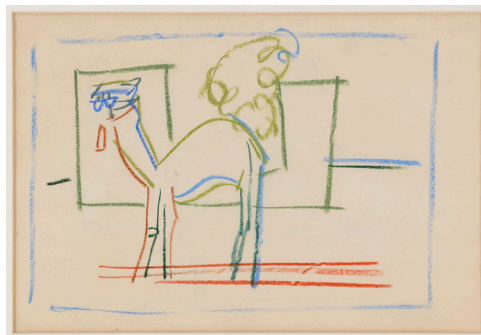
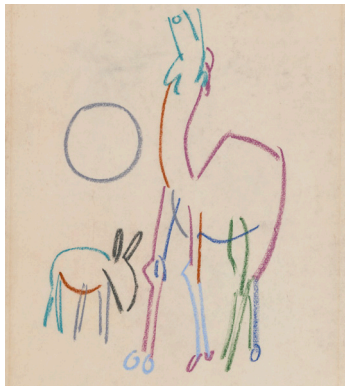
---



# Getting to the Essence

*"You have to know exactly where to put the color and where to leave the white. The main thing is to know when to stop."*

Pinchas Litvinovsky



**What defines a camel?**

**Write** six phrases which describe a camel to someone who has never seen one:

\_\_\_\_\_

\_\_\_\_\_

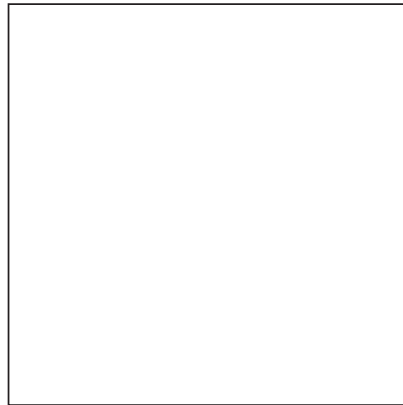




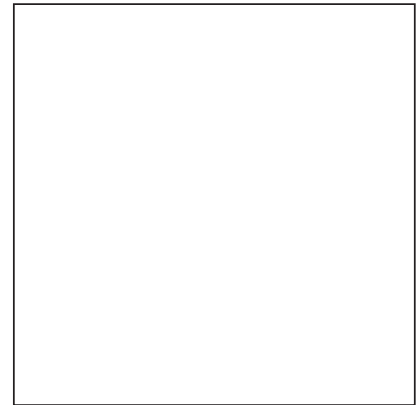
**Deconstruct** an iconic image like Litvinovsky:



**Box 1**



**Box 2**



**Box 3**

**Study** the doves in Box 1 closely.

**Box 1:** Right on the picture, **trace** the outline of each dove.

**Box 2:** **Choose** one of the doves and draw the outline here.

**Box 3:** **Draw** only the top outline of the dove you chose using a single, continuous line. Focus solely on capturing the basic shape of the dove, leaving out any unnecessary details.



## Litvinovsky's Ben Gurion: Icon or Iconoclasm?

*"We hereby declare the establishment of a Jewish state in the land of Israel."*

David Ben Gurion

**David Ben-Gurion** (born David Green) served as Israel's first Prime Minister (1948–1954, 1955–1963) and is widely regarded as the founding architect of the modern State of Israel.



**Choose** a compelling portrait of Ben-Gurion.

**Take a moment** to examine it closely.

Spend 30 seconds allowing your eyes to explore the portrait, moving from top to bottom and across its center, noticing all the details.



**Take your time** to consider how each aspect contributes to the portrait's overall character and impression.

**Which element of the portrait best conveys personality?**

**Rank** the following elements from 1 (least impactful) to 5 (most impactful):

- Pose (body position)
- Expression (facial look)
- Color
- Style (abstract, realistic, playful, etc.),
- Clothing



What do you think Ben-Gurion is thinking? **Imagine** what might be on his mind and **write** it in the speech bubble.



**Give** each painting a fitting title that captures its essence.

